

Imagine the invisible

Industrial



Gobi-384

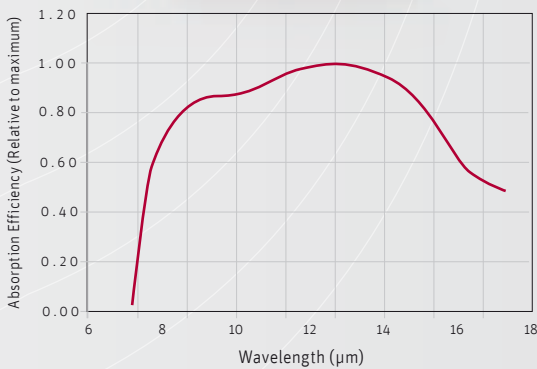
Uncooled smart thermal camera

Smart thermal Gobi-384 manages your processes

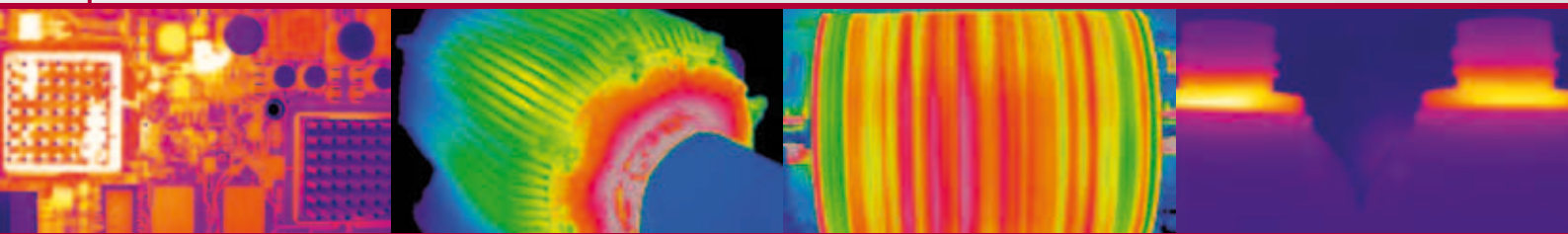
The Gobi-384 excels by its on-board calculating power in a compact yet complete camera system. With this plug-and-play camera you have the highest degree of flexibility via its user interface for camera control and via the various temperature ranges covered. You can readily fit the Gobi-384 into industrial environments for process control and use it as an IP network camera or connect it directly to a PC or video monitor.

Operating in the 8-14 micron wavelength range, the Gobi-384 camera can detect temperature differences as small as 0.05°C. The 384 x 288 pixel uncooled a-Si microbolometer detector array offers a 44% higher pixel count than other systems based on the same detector technology.

Need for customization? A variety of industry standard accessories is available.



Designed for use in



PCB inspection

Monitoring of critical installations

Paper inspection

Bottle inspection

Applications

- Alarm remote infrared detection
- Quality control and quality assurance
- Real-time process control and process monitoring
- Temperature measurement for automated processes

Benefits & Features

- High sensitivity
- Smart infrared camera
- High definition images
- Easily tuned as an IP network camera
- Suited for machine vision applications
- Connects directly to a PC or video monitor

Broad range of accessories available to simplify your inspection

▶ Lens & filter options



▶ Inputs



▶ Software



- Xeneth basic
- Xeneth advanced (optional)
- Xeneth radiometric (optional)
- Xeneth SDK (optional)
- Intelligent Quadrox Recording (optional)
- Thermography studio (optional)

▶ Outputs

▣ Specifications

Camera Specifications	Gobi-384
Lens (included)	
Focal length	18 mm f/1, HFOV 25.5°, standard manual focus
Optical interface	Adaptation rings for various lenses
Imaging performance	
Frame rate	50 Hz in 8 bit mode 25 Hz in 16 bit mode (depending on network load)
Window of interest	Minimum size 32 x 32
Non Uniformity Correction (NUC)	DSP-controlled
Temperature stabilization	DSP-controlled, no thermoelectric cooling required (TEC-less)
Integration type	Rolling Shutter
A to D conversion resolution	16 bit
Interfaces	
Camera control	Ethernet (TCP/IP): Xeneth API/SDK CameraLink: XSP (Xenics Serial Protocol)
Digital output	Ethernet (TCP/IP): 16 bit or 8 bit CameraLink: 16 bit base
Analog out	PAL or NTSC
Trigger	Trigger in and out; LVCMOS
Operating mode	Stand-alone or PC-controlled
Power requirements	
Power consumption	3.6 W at room temperature
Power supply	12 V
Physical characteristics	
Shock	70 G, 2 ms halfsine profile (without shutter)
Vibration	4.5 G, (5Hz to 500 Hz)
Ambient operating temperature	0°C to 50°C
Dimensions	70 W x 74 H x 65 L mm ³ (without lens)
Weight camera head	< 500 g (Lens not included)

Array Specifications	Gobi-384
Array Type	Uncooled microbolometer (a-Si)
Spectral band	8 μm to 14 μm
# Pixels	384 x 288
Pixel Pitch	25 μm
Array Cooling	Uncooled
Pixel operability	> 99%

▣ Product selector guide

Part number	NETD	Frame rate (Hz)	Analog out
G004C500S	50 mK	50	PAL
G004C500SN			NTSC
G004C501S	50 mK	9	PAL
G004C501SN			NTSC
G004C520S	80 mK	50	PAL
G004C520SN			NTSC
G004C521S		9	PAL
G004C521SN			NTSC