

Imagine the invisible

Scientific



# Gobi-384

Smart and affordable Gobi-384 simplifies the way you work

## The Gobi-384 is a compact thermal infrared camera for advanced R&D applications

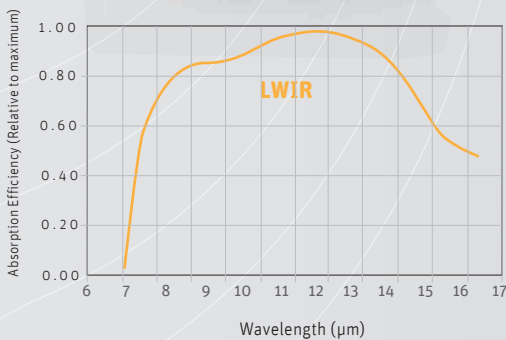
The Gobi-384 is perfectly designed for researchers and engineers, allowing to detect temperature differences as small as 0.05°C.

The easy plug-and-play infrared camera system and exclusive on-board Digital Signal Processor (DSP) allows for real-time image correction and recognition.

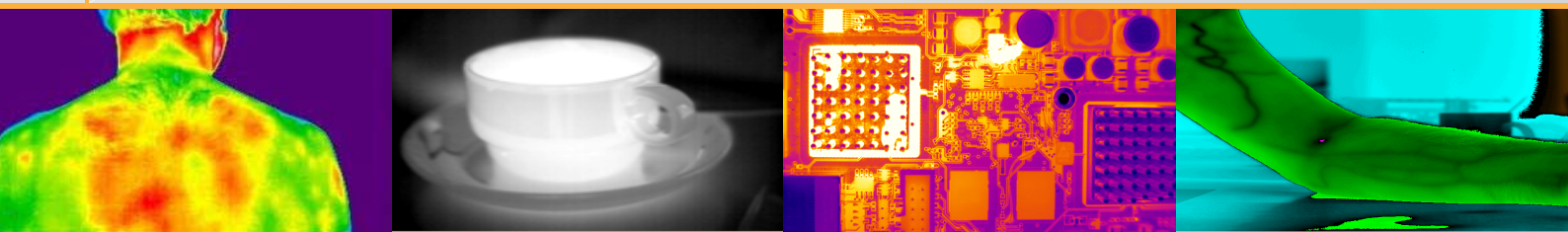
This combination makes it ideal for instant, accurate and cost-effective evaluation of your thermal imaging.

Using the Gobi-384 will bring your analysis to the next level of accuracy!

Need for customizing?  
A variety of industry-standard accessories is available.



### Designed for use in



Medical: infection detection

Stress analysis

PCB inspection

Thermal imaging: veins

### Applications

- R&D
- Process control
- Medical imaging
- Semiconductor inspection
- Quality control & assurance
- Accurate temperature measurement

### Benefits & Features

- High sensitivity
- Smart infrared camera
- High thermal accuracy
- Comprehensive thermal analysis
- Affordable multipurpose package
- TCP/IP Ethernet, CameraLink and trigger interfaces

## Broad range of accessories available to simplify your research

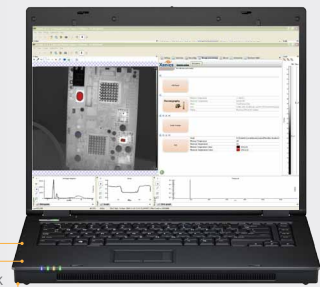
### ▶ Lens & filter options



### ▶ Inputs



### ▶ Software



- Xeneth radiometric
- Xeneth SDK
- Thermography studio (optional)

### ▶ Outputs

## Specifications

Camera Specifications	Gobi-384
<b>Lens (included)</b>	
Focal length	18 mm f/1, HFOV 25.5°, standard manual focus
Optical interface	Adaptation rings for various lenses
<b>Imaging performance</b>	
Frame rate	50 Hz in 8 bit mode 25 Hz in 16 bit mode (depending on network load)
Window of interest	Minimum size 32 x 32
Temperature stabilization	No thermoelectric cooling required (TEC-less)
Integration type	Rolling Shutter
A to D conversion resolution	16 bit
<b>Interfaces</b>	
Camera control	Ethernet (TCP/IP): Xeneth API/SDK CameraLink: XSP (Xenics Serial Protocol)
Digital output	Ethernet (TCP/IP): 16 bit or 8 bit CameraLink: 16 bit base
Analog out	PAL or NTSC
Trigger	Trigger in; LVCMOS
Operating mode	Stand-alone or PC-controlled
<b>Power requirements</b>	
Power consumption	3.6 W
Power supply	12 V
<b>Physical characteristics</b>	
Shock	70 G, 2 ms halfsine profile (without shutter)
Vibration	4.5 G, (5 Hz to 500 Hz)
Ambient operating temperature	-40°C to 70°C
Dimensions	70 W x 74 H x 65 L mm <sup>3</sup> (without lens)
Weight camera head	< 500 g (Lens not included)

Array Specifications	Gobi-384
Array Type	Uncooled microbolometer (a-Si)
Spectral band	8 μm to 14 μm
# Pixels	384 x 288
Pixel Pitch	25 μm
NETD	≈ 50 mK @ 30°C with F/1 lens
Array Cooling	Uncooled
Pixel operability	> 99%

## Product selector guide

Part number	NETD	Frame rate (Hz)	Analog out
XEN-000247	50 mK	50	Yes
XEN-000248			
XEN-000249		9	
XEN-000250			